

**1 SCHEMATIC LAYOUT**  
SCALE: 1" = 60'-0"

Stamp

Proj. No: 2018.395  
Drawn By: Author  
Reviewed By: Checker

Issue/Revision Schedule:

No.	Date	Description
A	01/17/19	PLANNING RESPONSE
B	04/09/19	PLANNING RESPONSE 2

**UNIT MIX**

BUILDING	UNIT SIZE	UNIT AREA	AREA	UNIT COUNT	% OF UNITS
BUILDING A	5 x 5	25 SF	100 SF	4	5%
	10 x 10	100 SF	12,800 SF	128	19%
BUILDING B	10 x 10	100 SF	12,600 SF	126	19%
	10 x 20	200 SF	24,000 SF	120	38%
BUILDING C	10 x 10	100 SF	12,600 SF	126	19%
	10 x 20	200 SF	24,000 SF	120	38%
GRAND TOTAL		300 SF	24,800 SF	124	57%
		525 SF	50,300 SF	382	100%

**SITE DATA**

PARCEL	589,421 SF	
Grand total	589,421 SF	
NAME	AREA	PHASE DEMOLISHED
PHASE I		
SITE	439,427 SF	
OFFICE	600 SF	
STORAGE	12,955 SF	
PARKING	98,957 SF	
PARKING	37,482 SF	PHASE II
	589,421 SF	
PHASE II		
STORAGE	37,482 SF	
GRAND TOTAL	37,482 SF	
GRAND TOTAL	626,903 SF	
<b>STORAGE/SITE RATIO:</b>		
219,823 SF	/	589,421 SF = 37% COVERAGE

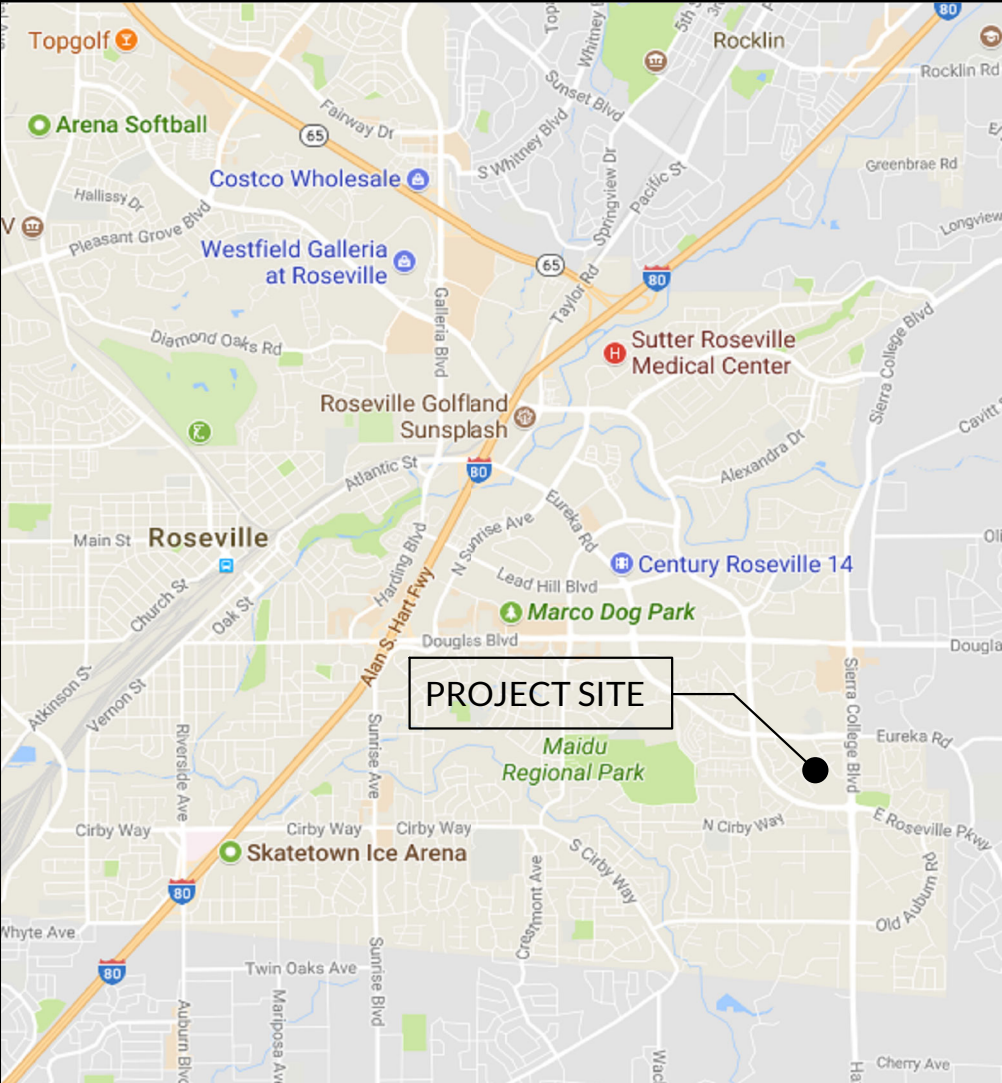
**PARKING SCHEDULE**

PROPOSED PARKING (STORAGE)	
SIZE	Count
BUSINESS	
9' x 20'	5
9' x 20' (8' AISLE)	1
	6
STORAGE	
9' x 20'	4
12' x 20'	85
12' x 30'	130
12' x 40'	299
GRAND TOTAL	305

**FENCE LEGEND AND THUMBNAIL**

- ORNAMENTAL FENCE
- CMU WALL
- WOOD FENCE

**VICINITY MAP**

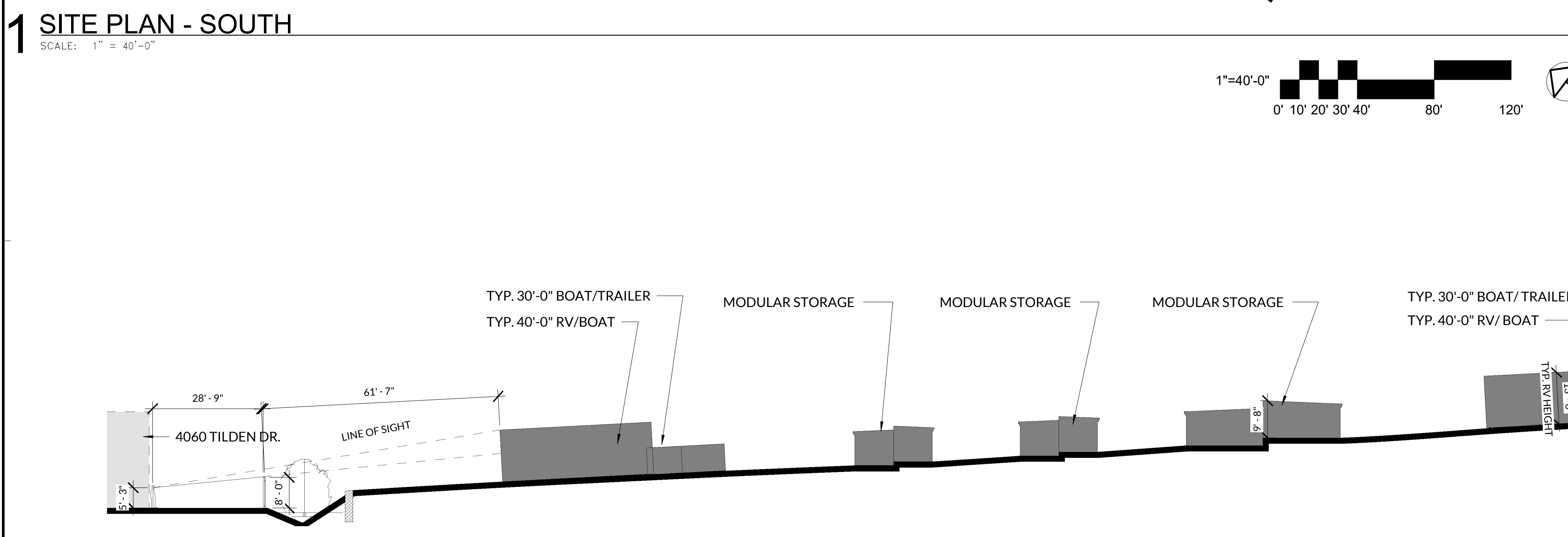
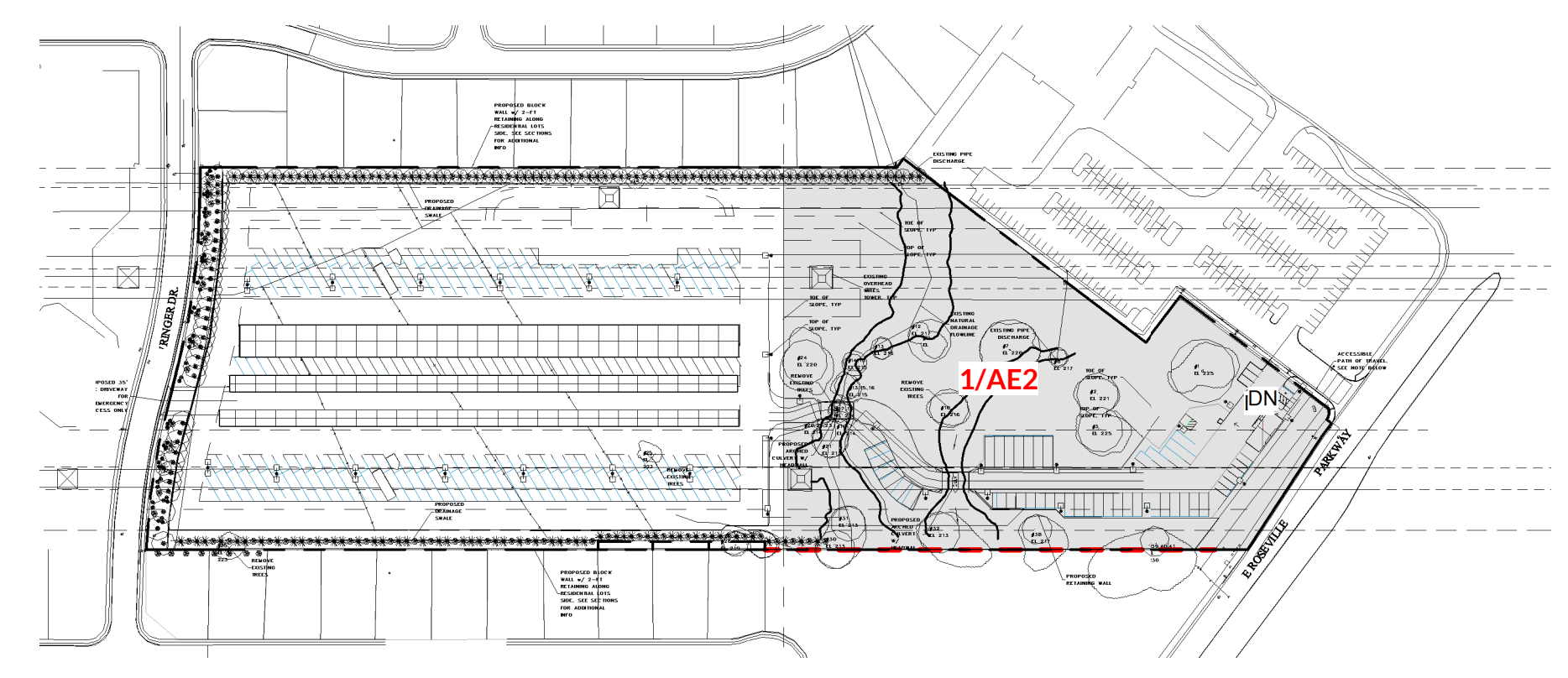
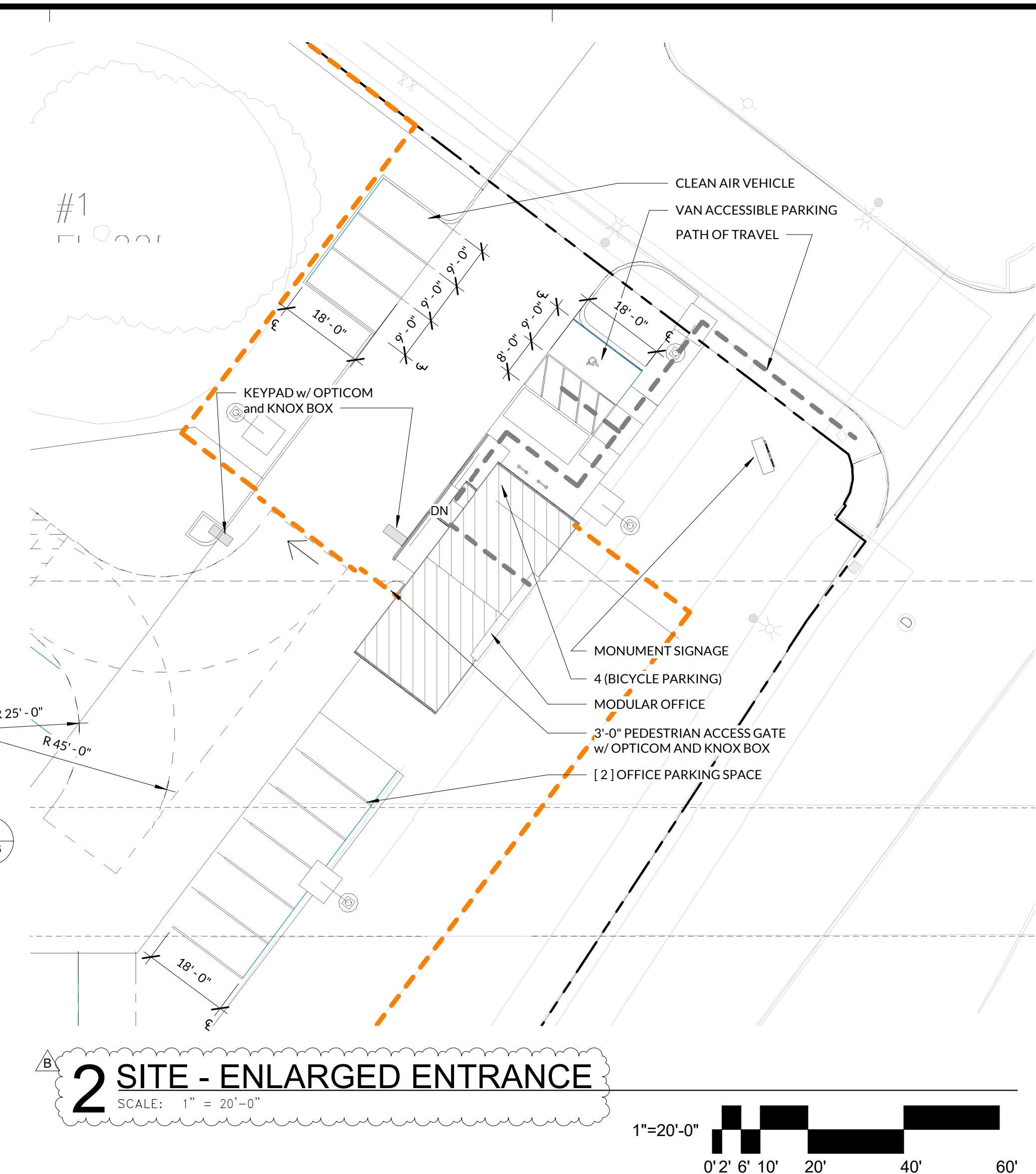
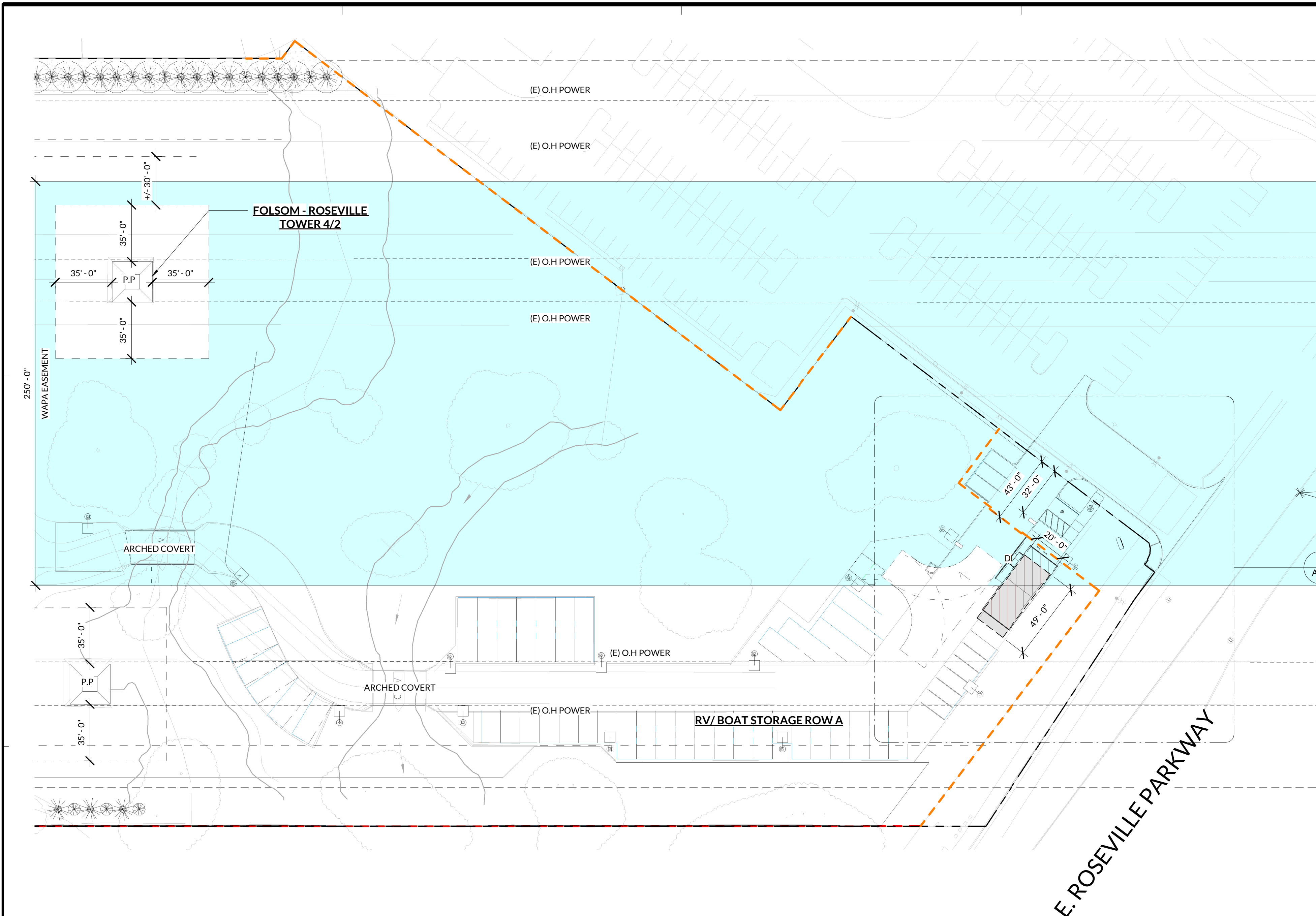


Copyright Statement:  
All drawings and written material appearing herein constitute original and unpublished original work of the architect and may not be duplicated, used, or disclosed without prior written consent of the architect.

**CONCEPTUAL SITE PLAN**



Z:\Active\2018.395 - Praxis - Roseville - Johnson Ranch\CAD\19-1203 - Praxis - Granite Bay Rv Storage PC2.rvt



Stamp

Proj. No:	2018.395
Drawn By:	Author
Reviewed By:	Checker

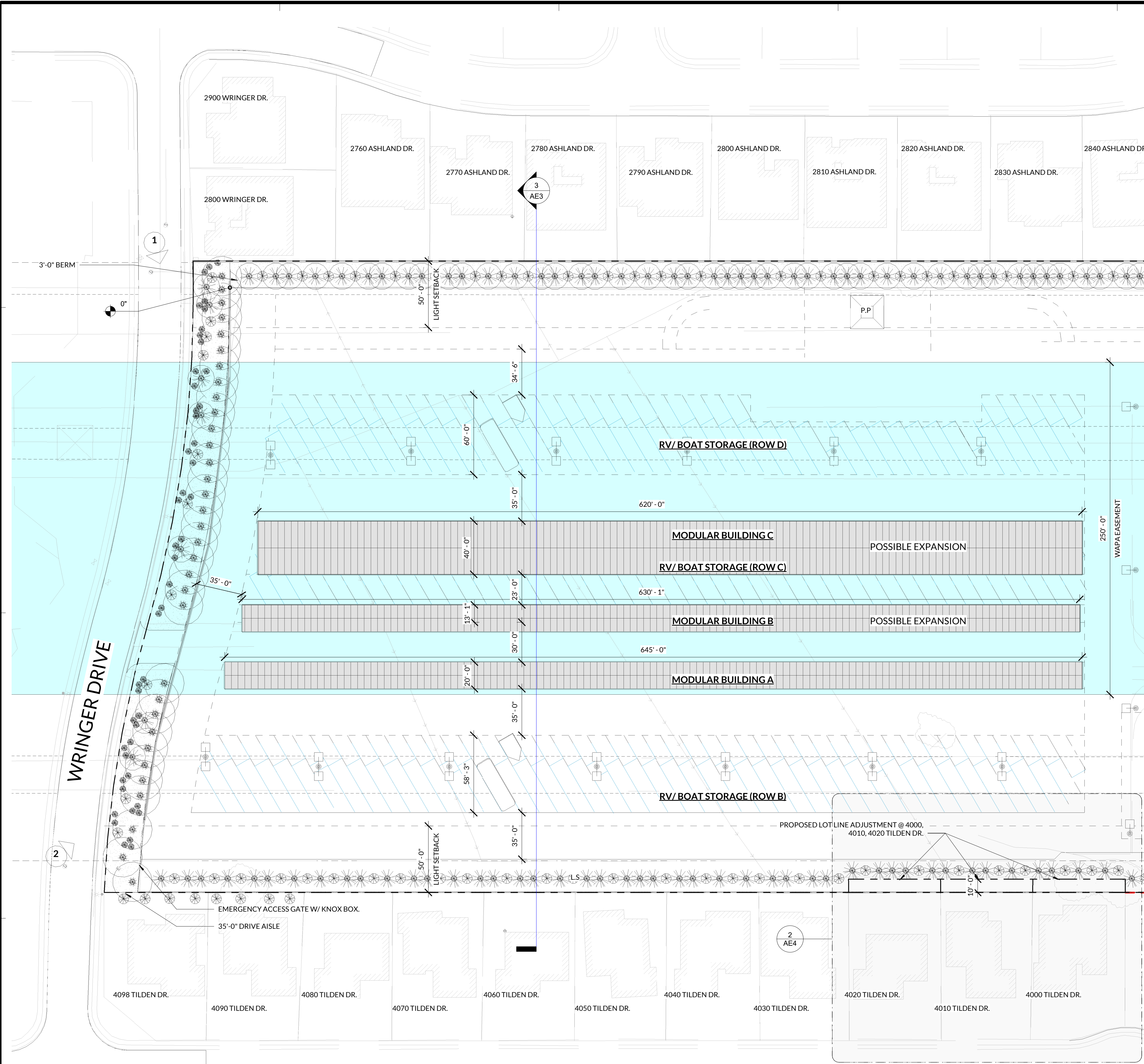
Issue/Revision Schedule:

No.	Date	Description
B	04/09/19	PLANNING RESPONSE 2

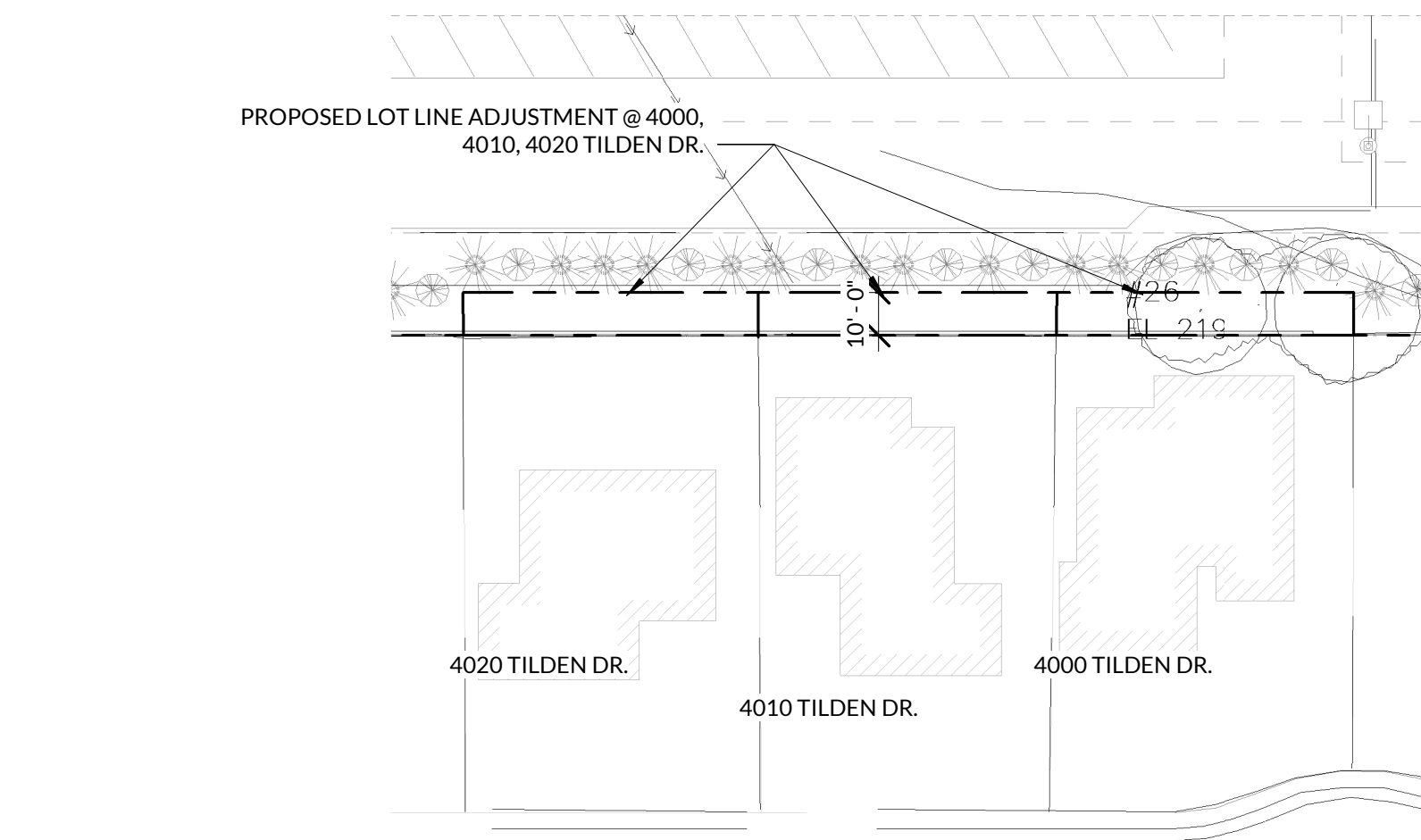
Copyright Statement:  
All drawings and written material appearing herein constitute original and unpublished original work of the architect and may not be duplicated, used, or disclosed without prior written consent of the architect.

CONCEPTUAL  
SITE PLAN

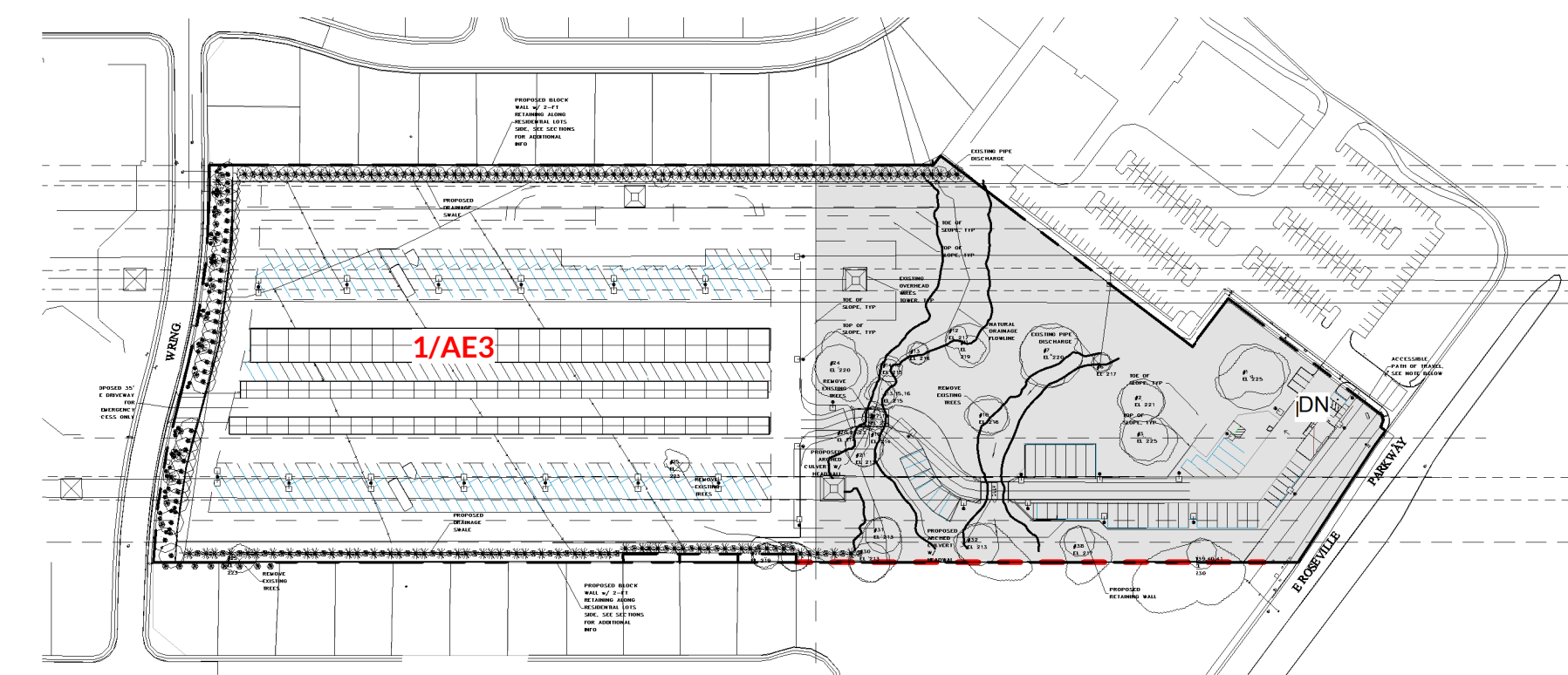
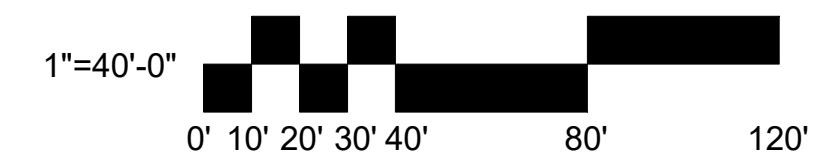
Z:\Active\2018\395 - Praxis - Roseville - Johnson Ranch\CAD\19-1203 - Praxis - Granite Bay Rv Storage PC2.rvt



**1 SITE PLAN - NORTH**  
SCALE: 1" = 40'-0"



**2 ENLARGED LOT LINE ADJUSTMENT**  
SCALE: 1" = 40'-0"



**KEY PLAN**  
SCALE: 1" = 200'-0"

Stamp

Proj. No: 2018.395  
Drawn By: Author  
Reviewed By: Checker

Issue/Revision Schedule:  
No. Date Description

Copyright Statement:  
All drawings and written material appearing herein constitute original and unpublished original work of the architect and may not be duplicated, used, or disclosed without prior written consent of the architect.

**CONCEPTUAL  
SITE PLAN**